



Advisory # 2019-A-021

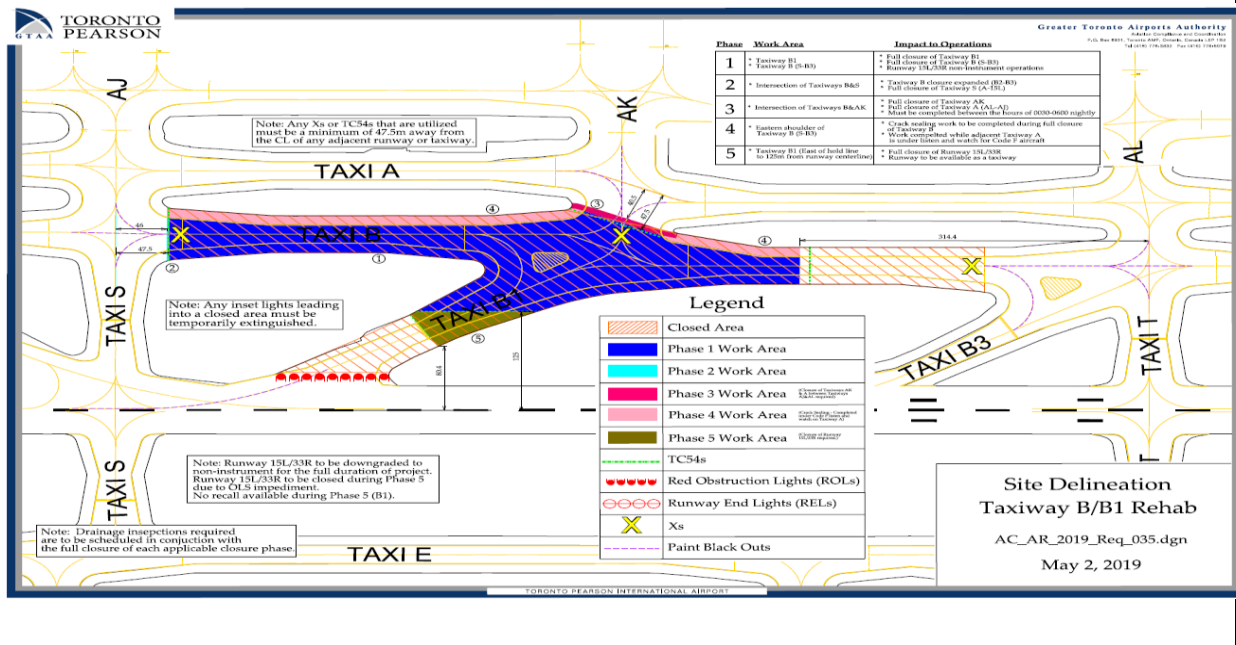
**Subject: 12647 – Taxiway B Rehabilitation**

**From:** Airport Development and Technical Services

**Contact:** Samantha Pinto, Project Manager [Samantha.Pinto@GTAA.com](mailto:Samantha.Pinto@GTAA.com)

**Date:** 2019-05-10

Effective May 13, rehabilitation work at Taxiway B1 & Taxi B (S-B3) will commence and will remain in effect until June 7th. As a result of this work, there will be a full closure of Taxiway B1, a full closure of Taxiway B (S-B3) as well as an operational impact on Runway 15L/33R. See OCC # 19-237.



Phase	Work Area	Impact to Operations	Days (sliding schedule)	Anticipated Dates (2019)	Working Hours (L)	Recall
1	- Taxiway B1 - Taxiway B (5-B3)	- Full closure of TWY B1 - Full closure of TWY B (5-B3) - RWY 15L/33R non-Instrument operations	1-19	May 13 to June 7	7am - 6pm	2 hours
2	- Intersection of TWY's B&S	- TWY B closure expanded (B2-B3) - Full closure of TWYS (A-15L)	2, 3, 7, 8, 9, 18	May 14, 15, 22, 23, 24 June 6	7am - 3pm	2 hours
3	- Intersection of TWY's B&AK	- Full closure of TWY AK - Full closure of TWY A (AL-AJ) - Must be completed between the hours of 0030-0600 nightly	6, 10, 11, 15, 18	May 21, 27, 28 June 3, 6	12:30am - 6am	2 hours
4	- Eastern shoulder of TWY B (5-B3)	- Crack sealing work to be completed during full closure of TWY B - Work completed while adjacent TWY A is under listen and watch for code F aircraft	1-19	May 13 to June 7	7am - 6pm	2 hours
5	- TWY B1 (East of hold line to 125m from RWY centerline)	- Full closure of RWY 15L/33R - RWY to be available as a TWY	4, 5, 8, 9, 11, 16	May 16, 17, 23, 24, 28, June 4	7am - 6pm	2 hours
<p align="center">** Note - On Day 1 and Day 19 contractor would also complete the temporary line marking as required at the closure limits.</p>						